

Jergens

ZPS

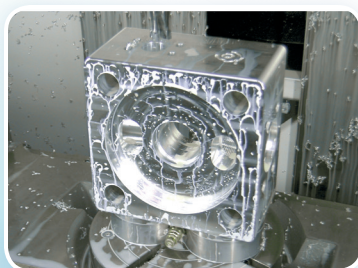
ZERO.POINT.SYSTEM

Accuracy, speed and repeatability within <math><0.005\text{mm}</math> (0.0002").

This revolutionary technology allows you to fix, position and clamp in a single step, cutting set up times by up to 90%. Available with either pneumatic or hydraulic release, these positive locking locating modules allow operators to quickly change out large and small fixtures with extreme accuracy and minimal effort.

Applications include:

- » Milling
- » Grinding
- » Assembly
- » Measuring
- » Welding
- » Robotics /Automation
- » Injection Molding
- » Material Handling



Pull studs can be installed directly into workpieces for 5-axis machining.



Ideal solution for large, heavy workpieces.



Corrosion-resistant construction suited for use in food service, pharmaceutical and chemical applications.



Variable dimensions allow for optimal use of traverse displacement.





Harness the Power of “Zero.”

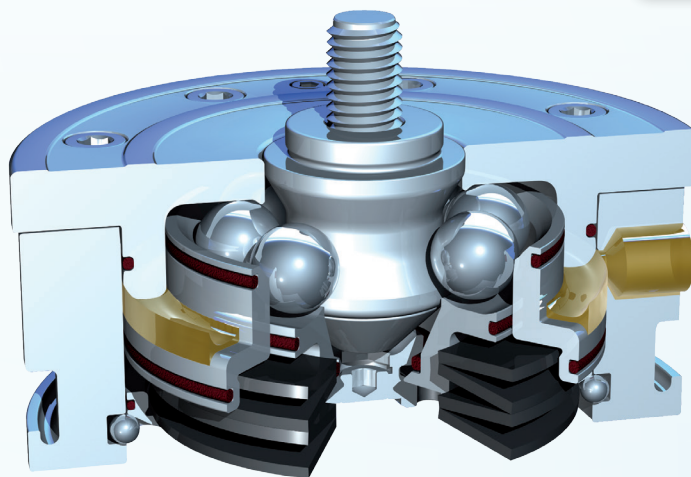
Quickly and accurately locate and clamp vises or fixtures... and with retention studs attached to your part, direct mount your component for machining or welding without interference from jaws or clamps. That’s the beauty of what Jergens ZPS Zero Point System can deliver.

Features of the ZPS Zero Point System include:

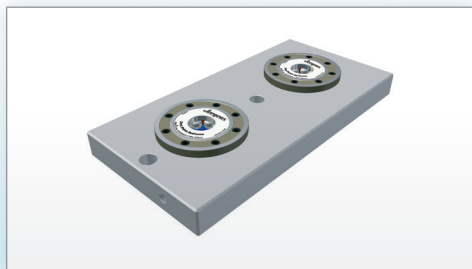
- » Position & Clamp in One Operation
- » Repeatability up to .0002”
- » Flexible Design Options
- » Solutions for Small and Large Parts
- » Available in Pneumatic & Hydraulic Modules
- » Reduce Set Up Time up to 90% or More

Our Valued Added Solutions Team can help you engineer a ZPS solution for your Application.

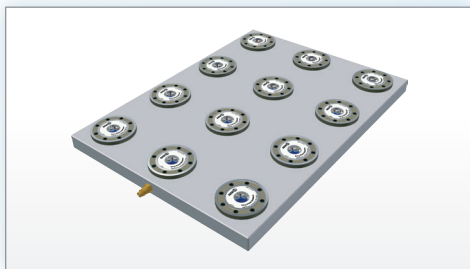
Jergens ZPS Zero Point System... it’s time to Harness the Power of “Zero.”



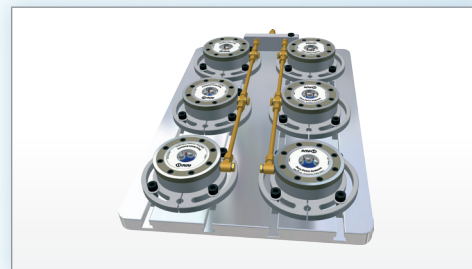
Zero Point System Components:



Clamping Plates w/Built-In Modules



Threaded Modules



Raised/Mounted Modules



Flange Type Modules



Low pressure Clamping Module



Manual ZPS Module

