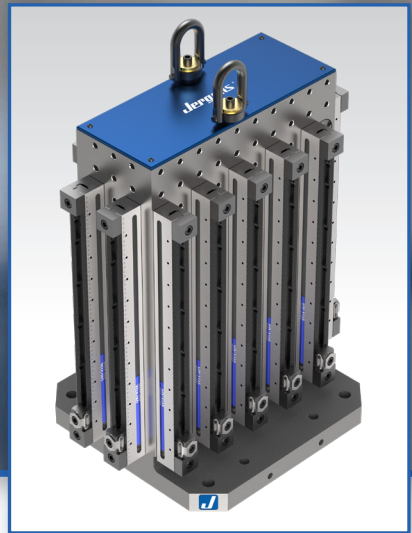
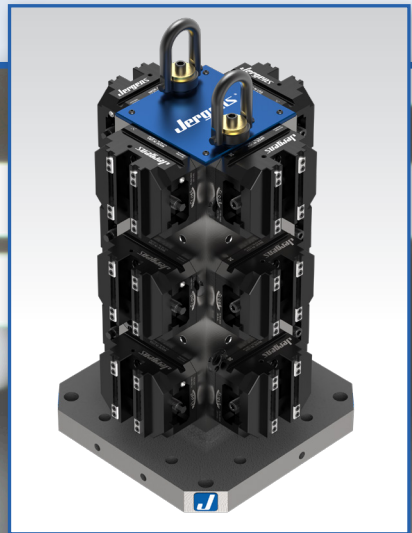
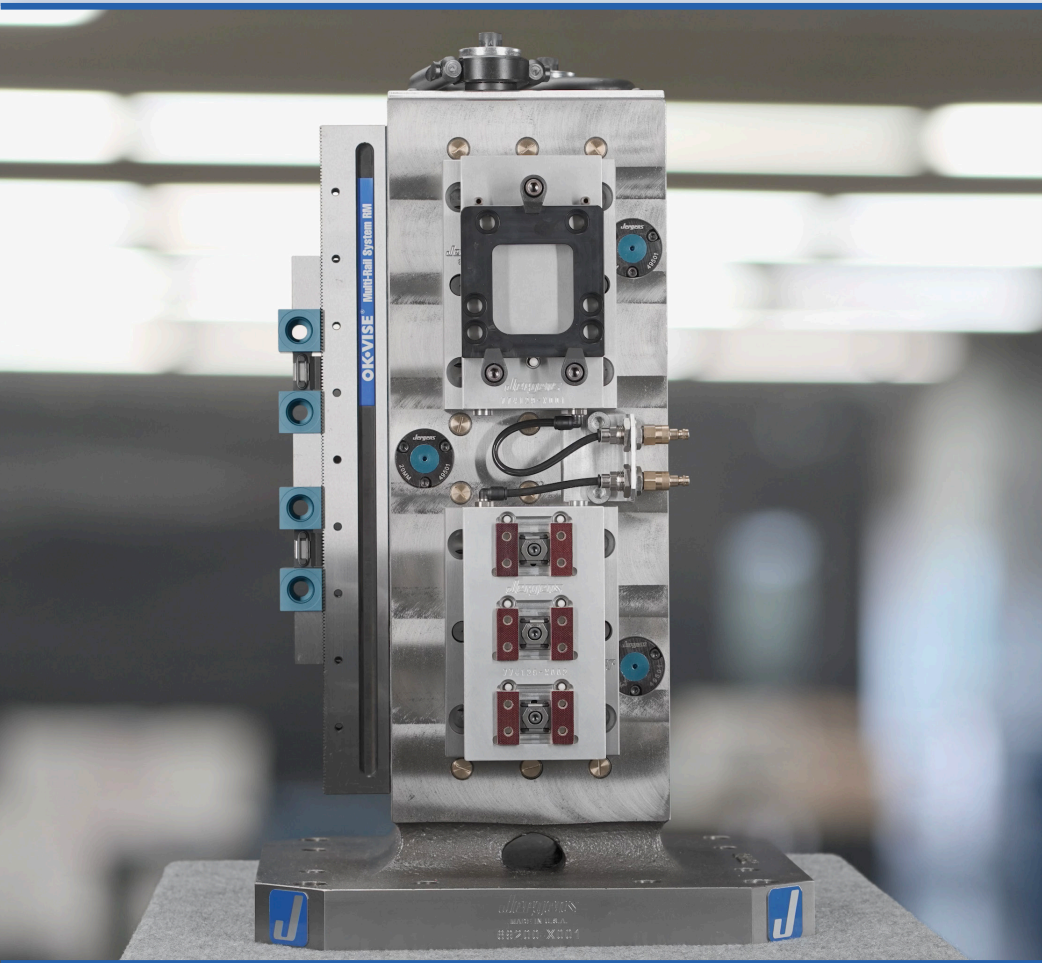




Jergens®

TOOLING COLUMN BUYING GUIDE

PRE-ENGINEERED SOLUTIONS FOR HORIZONTAL MACHINING APPLICATIONS



WORKHOLDING SOLUTIONS | SPECIALTY FASTENERS | LIFTING SOLUTIONS

©2022 JERGENS, INC.

Jergens®

15700 S. WATERLOO ROAD, CLEVELAND, OH 44110-3898

☎ 877.426.2504 | 🌐 JERGENSINC.COM/WORKHOLDING | ✉ WORKHOLDING@JERGENSINC.COM

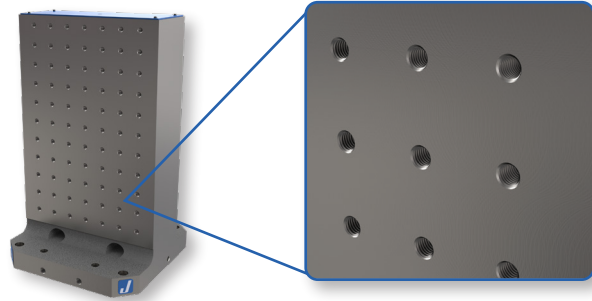




CUSTOMIZATION

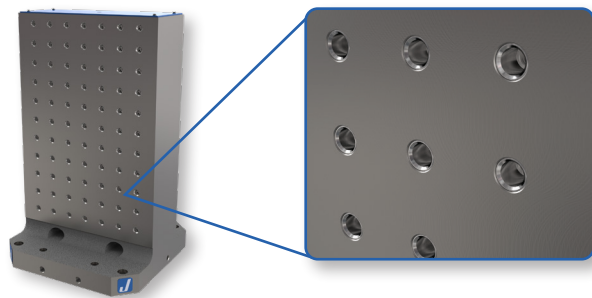
Jergens tooling columns are fully customizable to provide the optimum workholding solution for your unique application. Incorporate one of our industry leading “Quick-Change” systems for maximum productivity. Contact our Technical Sales Engineering Team to request a quote for your custom configuration or project.

TAPPED GRID



A grid pattern of drilled and tapped holes designed to meet your application needs provides a flexible surface for mounting assorted fixture plates, workholding devices, and top-tooling. Jergens can accommodate most thread sizes and holes spacings

BUSHED & TAPPED GRID



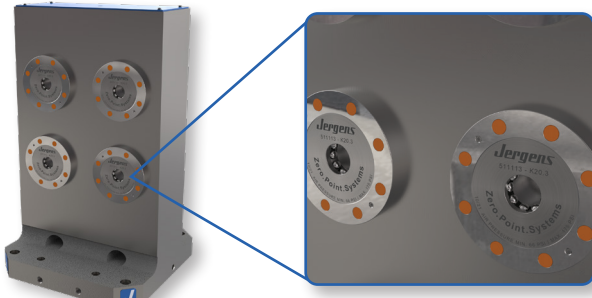
Adding precision bushings to each hole allows for accurate positioning with dowel pins or shoulder screws. Jergens QLS grid pattern provides fast and accurate mounting for a wide range of standard top tooling from our popular modular systems like Quick-Loc™

BALL LOCK®



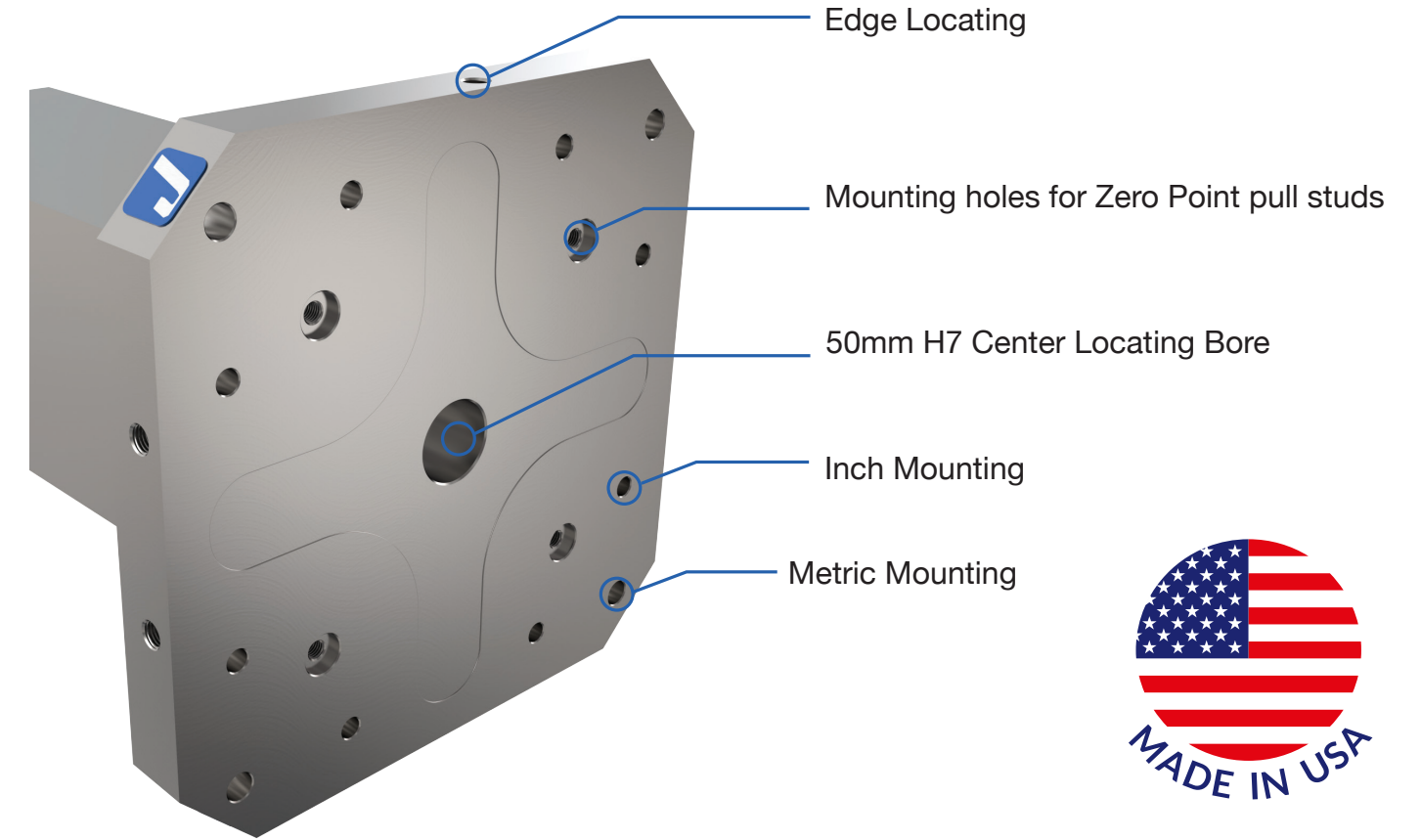
Ball-Lock® is Jergens most popular quick change system. Adding receiver bushings to the face of a column provides a method of quickly and accurately locating fixtures onto column surfaces. Reducing set-up time, fixtures can often be exchanged in less than a minute and positioned with repeatability of +/- .0005" (.013mm)

ZERO POINT SYSTEM (ZPS)

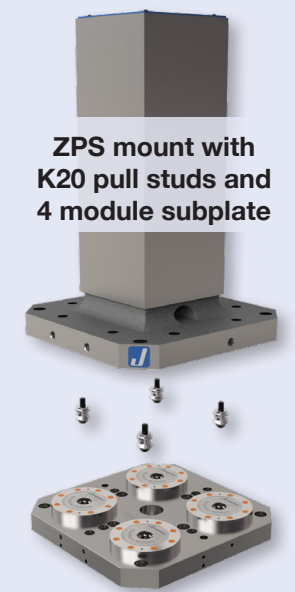
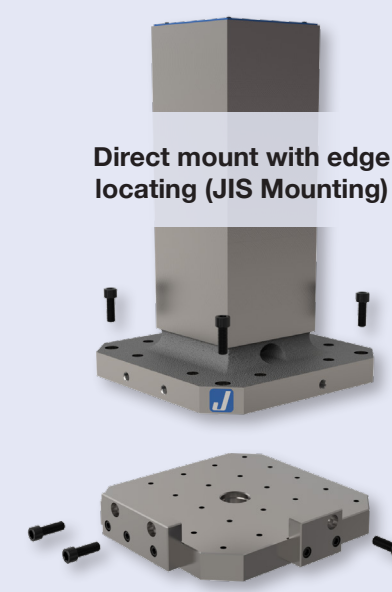


Fix, Position, and Clamp in a Single Step with Jergens' Zero-Point Mounting System. This revolutionary technology cuts set-up time by up to 90% by combining fixing, positioning and clamping in a single operation. Available with either pneumatic or hydraulic release, these positive locking locating modules allow operators to quickly change out large and small machine fixtures with extreme accuracy and minimal effort. The ZPS system is repeatable to within .0002" (0.005mm).

STANDARD FEATURES

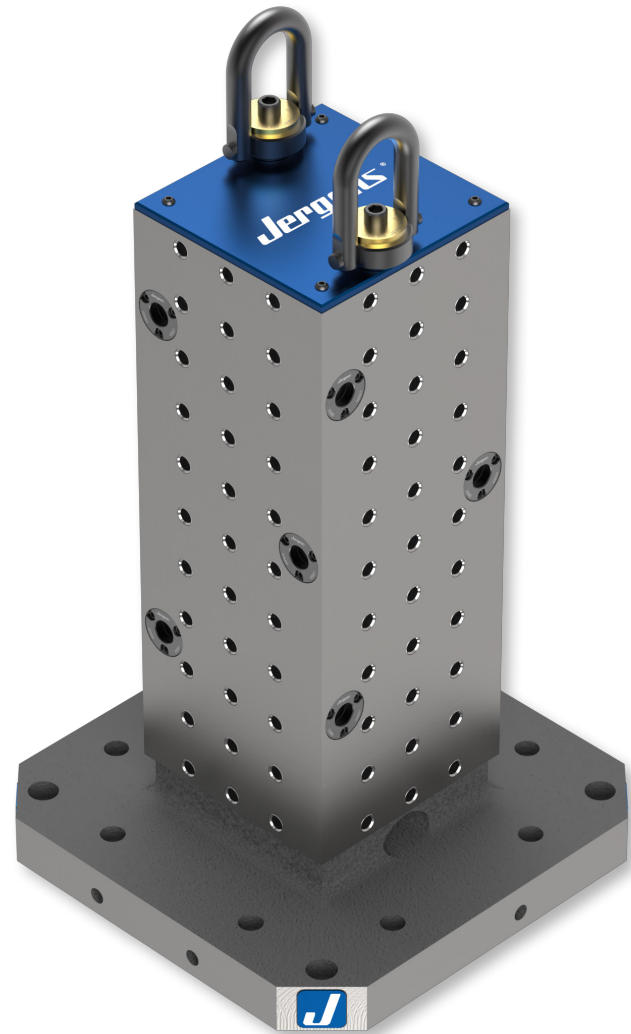


MOUNTING OPTIONS





400MM SQUARE TOOLING COLUMN: 69202

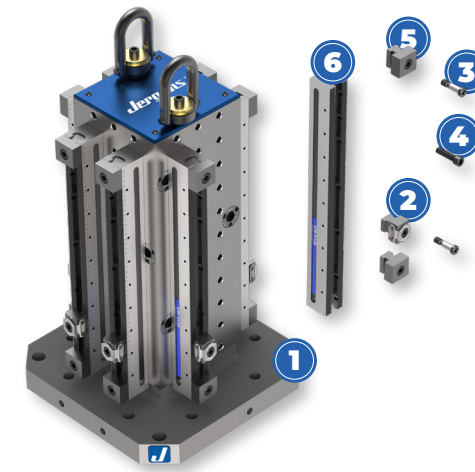


FEATURES & BENEFITS

- Rigid single piece construction
- Stress Relieved Class 40 Cast Iron
- Faces include QLS & Ball Lock® mounting patterns
- Base and sides milled flat, perpendicular, and parallel within 0.001"/ft
- Includes mounting holes for popular 400MM pallets
- Blank & QLS pattern only tooling columns also available
- *Custom sizes and configurations available upon request*
- **Hardware Includes:**
 - Top coverplate
 - (2) Jergens Center Pull Hoist Rings
 - (12) 20MM Face Mount Receiver Bushings

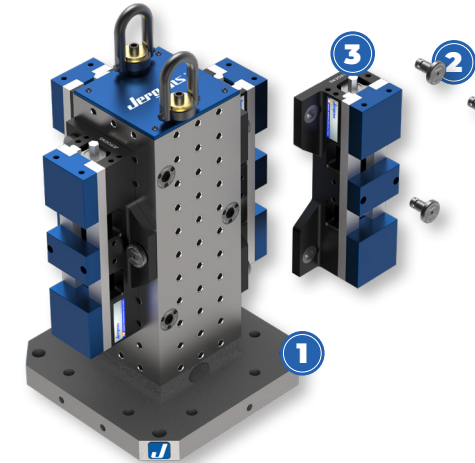


OK-VISE® CAST IRON TOOLING COLUMN



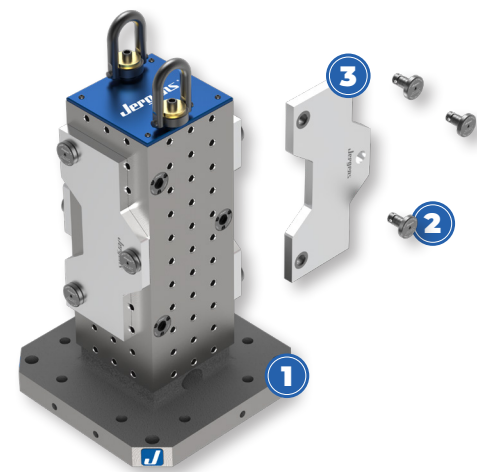
Part Number	Description	Qty	
1	69202	400MM Square Tooling Column	1
2	RMC-DS	OK-VISE Smooth Clamp	8
3	5SH1225	Locator Bolt	16
4	771720	M12 SHCS	40
5	RMS-S	OK-VISE Smooth Stop	16
6	RM-500	500MM OK-VISE Multi-Rail Base	8

PRODUCTION VISE CAST IRON TOOLING COLUMN



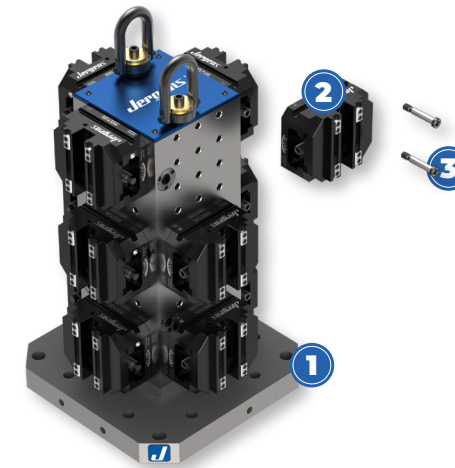
Part Number	Description	Qty	
1	69202	400MM Square Tooling Column	1
2	49601	20MM Ball Lock® Shank	12
3	49405	4" Production Vise, Ball Lock® Base	4

BALL LOCK® CAST IRON TOOLING COLUMN



Part Number	Description	Qty	
1	69202	400MM Square Tooling Column	1
2	49601	20MM Ball Lock® Shank	12
3	28705	Ball Lock® Jigsaw Fixture Plate	4

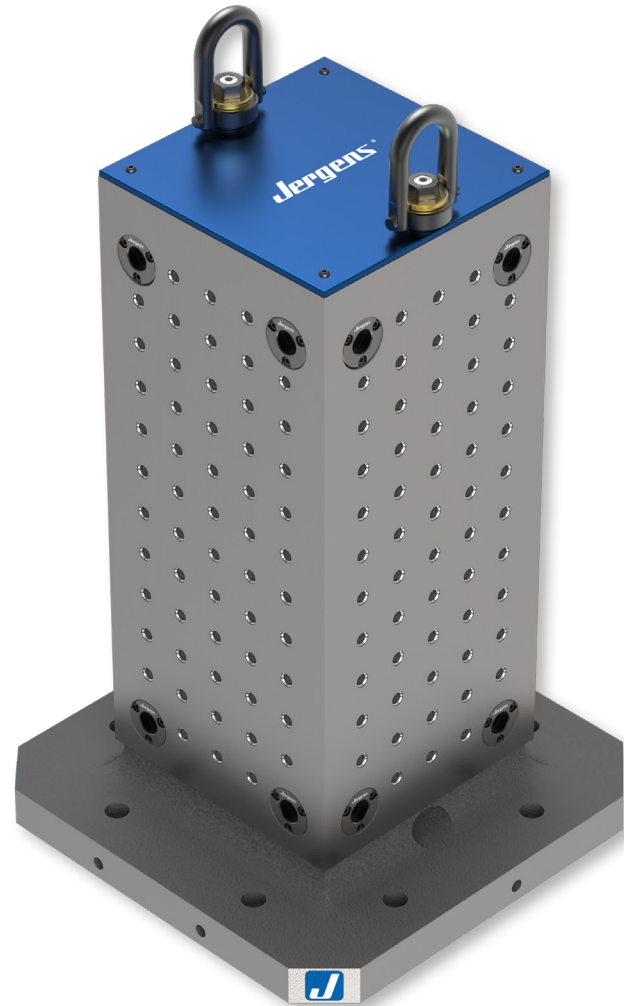
SELF-CENTERING VISE CAST IRON TOOLING COLUMN



Part Number	Description	Qty	
1	69202	400MM Square Tooling Column	1
2	5CV13041-IN	130mm x 160mm Self-Centering Vise	12
3	5SH1250	Locator Bolt	24



500MM SQUARE TOOLING COLUMN: 69232

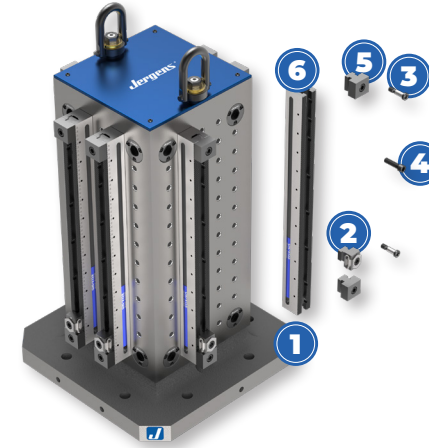


FEATURES & BENEFITS

- Rigid single piece construction
- Stress Relieved Class 40 Cast Iron
- Faces include QLS & Ball Lock® mounting patterns
- Base and sides milled flat, perpendicular, and parallel within 0.001"/ft
- Includes mounting holes for popular 500MM pallets
- Blank & QLS pattern only tooling columns also available
- Custom sizes and configurations available upon request
- Hardware Includes:
 - Top coverplate
 - (2) Jergens Center Pull Hoist Rings
 - (16) 25MM Face Mount Receiver Bushings

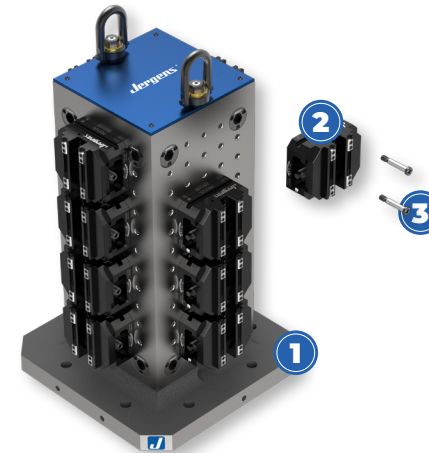


OK-VISE® CAST IRON TOOLING COLUMN



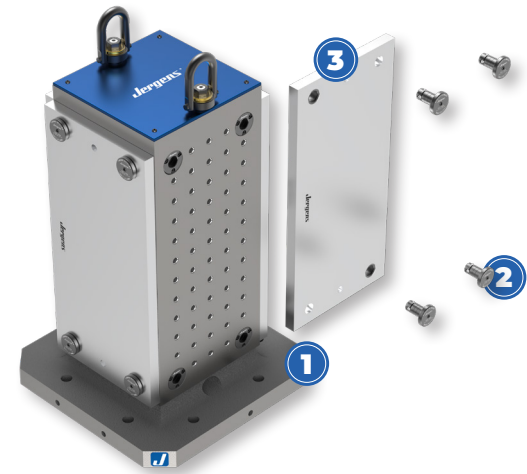
Part Number	Description	Qty
1 69232	500MM Square Tooling Column	1
2 RMC-DS	OK-VISE Smooth Clamp	8
3 5SH1225	Locator Bolt	16
4 771720	M12 SHCS	48
5 RMS-S	OK-VISE Smooth Stop	16
6 RM-600	600MM OK-VISE Multi-Rail Base	8

SELF-CENTERING VISE CAST IRON TOOLING COLUMN



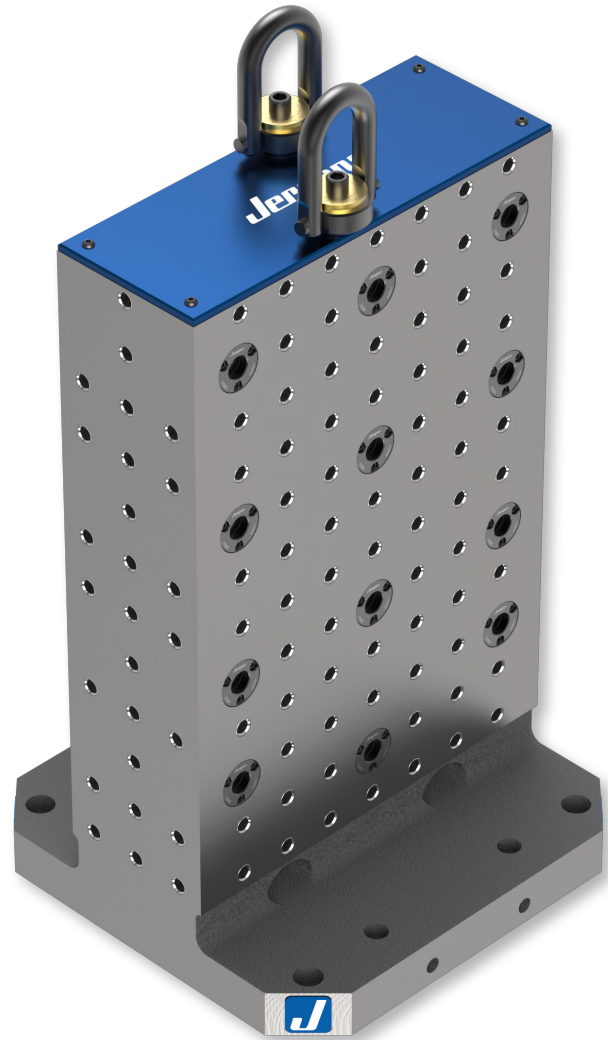
Part Number	Description	Qty
1 69232	500MM Square Tooling Column	1
2 5CV13041-IN	130MM x 160MM Self-Centering Vise	16
3 5SH1250	Locator Bolt	32

BALL LOCK® CAST IRON TOOLING COLUMN



Part Number	Description	Qty
1 69232	500MM Square Tooling Column	1
2 49612	25MM Ball Lock® Shank	16
3 28842	12 x 25 x 1 Ball Lock® Fixture Plate	4

400MM 2-SIDED TOOLING COLUMN: 69222

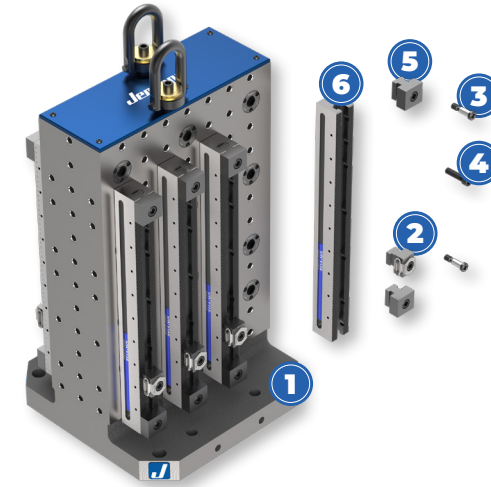


FEATURES & BENEFITS

- Rigid single piece construction
- Stress Relieved Class 40 Cast Iron
- Faces include QLS & Ball Lock® mounting patterns
- Base and sides milled flat, perpendicular, and parallel within 0.001"/ft
- Includes mounting holes for popular 400MM pallets
- Blank & QLS pattern only tooling columns also available
- Custom sizes and configurations available upon request
- Hardware Includes:
 - Top coverplate
 - (2) Jergens Center Pull Hoist Rings
 - (24) 20MM Face Mount Receiver Bushings

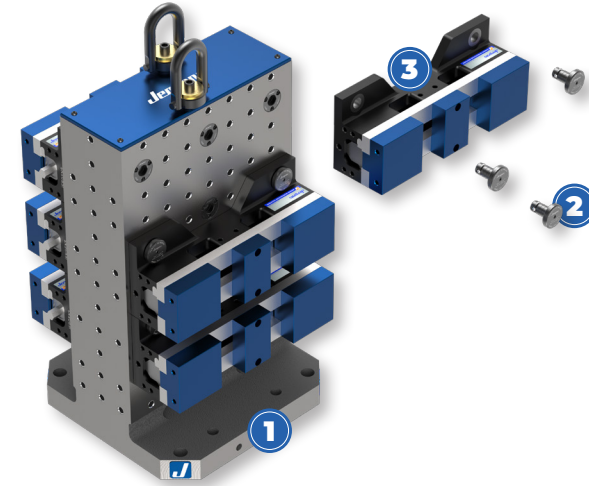


OK-VISE® CAST IRON TOOLING COLUMN



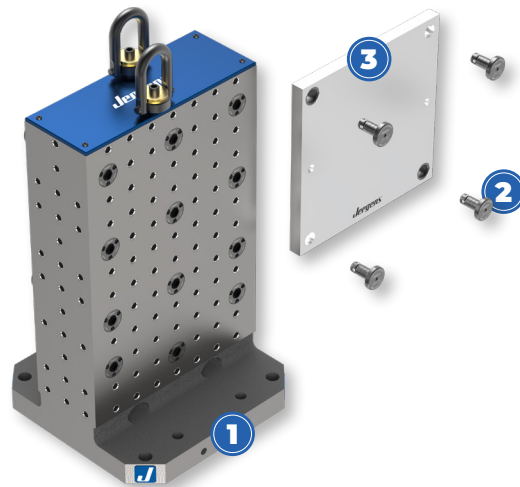
Part Number	Description	Qty	
1	69222	400MM 2-Sided Tooling Column	1
2	RMC-DS	OK-VISE Smooth Clamp	8
3	5SH1225	Locator Bolt	16
4	771720	M12 SHCS	40
5	RMS-S	OK-VISE Smooth Stop	16
6	RM-500	500MM OK-VISE Multi-Rail Base	8

PRODUCTION VISE CAST IRON TOOLING COLUMN



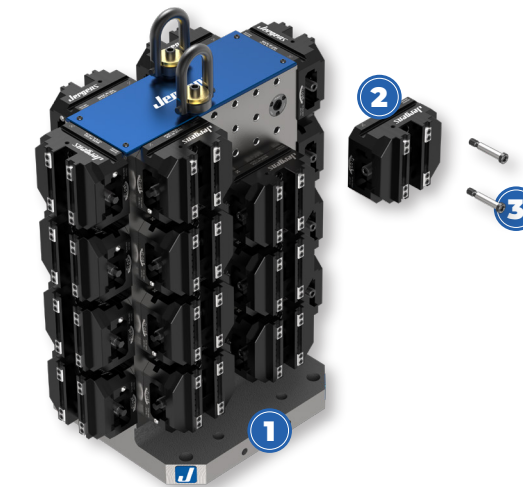
Part Number	Description	Qty	
1	69222	400MM 2-Sided Tooling Column	1
2	49601	20MM Ball Lock® Shank	18
3	49405	4" Production Vise, Ball Lock® Base	6

BALL LOCK® CAST IRON TOOLING COLUMN



Part Number	Description	Qty	
1	69222	400MM 2-Sided Tooling Column	1
2	49601	20MM Ball Lock® Shank	8
3	28819	16 x 20 x 0.75 Fixture Plate	2

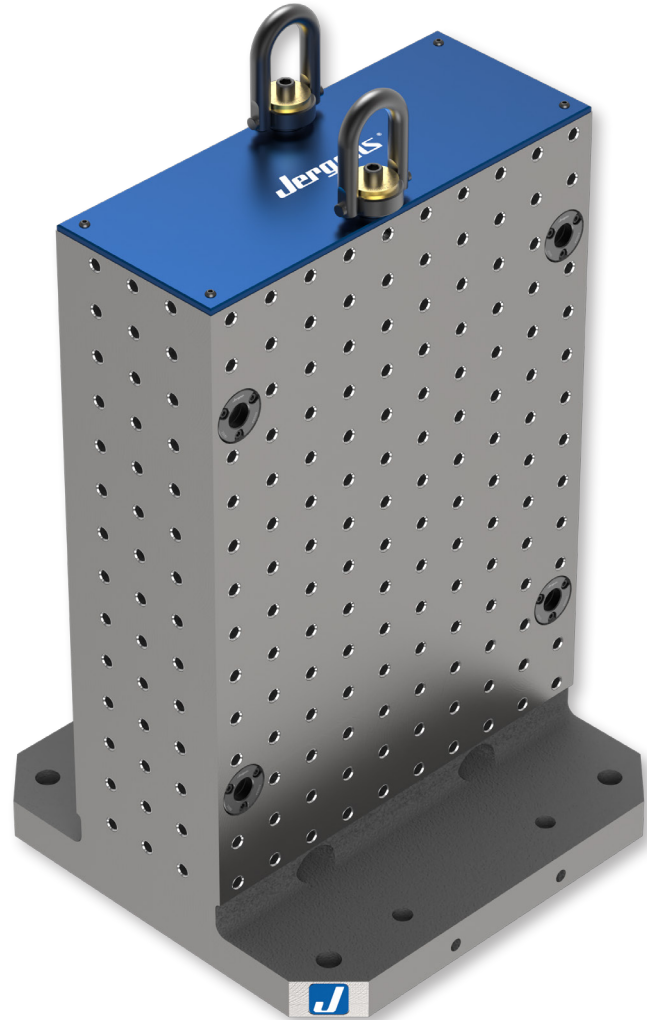
SELF-CENTERING VISE CAST IRON TOOLING COLUMN



Part Number	Description	Qty	
1	69222	400MM 2-Sided Tooling Column	1
2	5CV13041-IN	130MM x 160MM Self-Centering Vise	24
3	5SH1250	Locator Bolt	48



500MM 2-SIDED TOOLING COLUMN: 69253

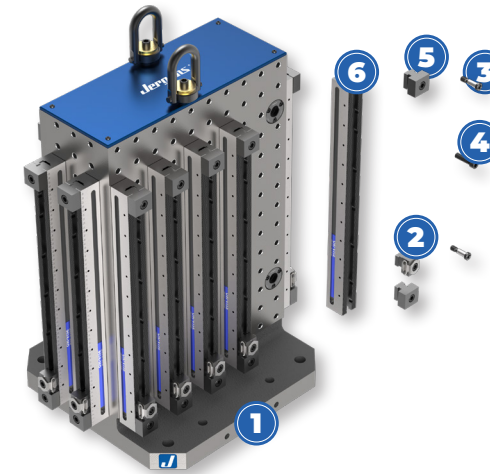


FEATURES & BENEFITS

- Rigid single piece construction
- Stress Relieved Class 40 Cast Iron
- Faces include QLS & Ball Lock® mounting patterns
- Base and sides milled flat, perpendicular, and parallel within 0.001"/ft
- Includes mounting holes for popular 500MM pallets
- Blank & QLS pattern only tooling columns also available
- Custom sizes and configurations available upon request
- Hardware Includes:
 - Top coverplate
 - (2) Jergens Center Pull Hoist Rings
 - (8) 25MM Face Mount Receiver Bushings

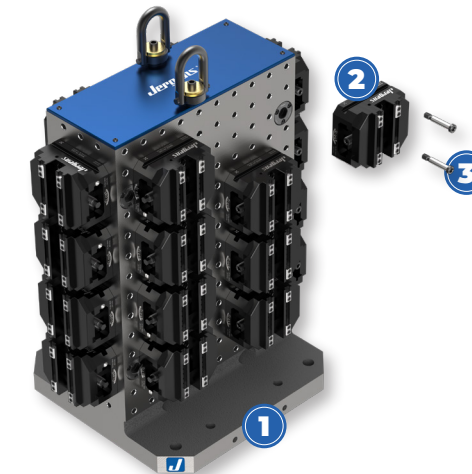


OK-VISE® CAST IRON TOOLING COLUMN



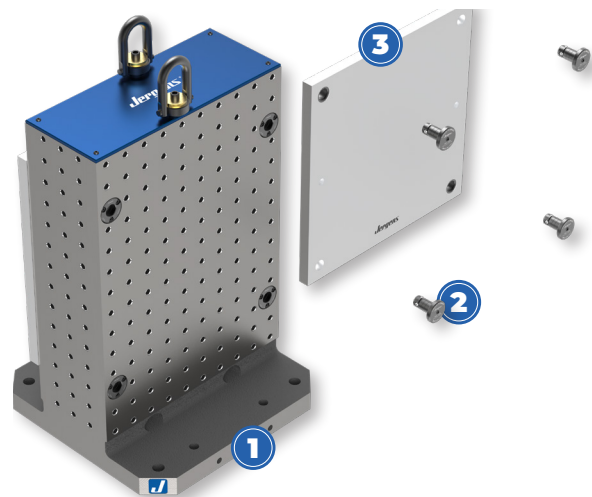
Part Number	Description	Qty
1 69253	500MM 2-Sided Tooling Column	1
2 RMC-DS	OK-VISE Smooth Clamp	14
3 5SH1225	Locator Bolt	28
4 771720	M12 SHCS	84
5 RMS-S	OK-VISE Smooth Stop	28
6 RM-600	600MM OK-VISE Multi-Rail Base	14

SELF-CENTERING VISE CAST IRON TOOLING COLUMN



Part Number	Description	Qty
1 69253	500MM 2-Sided Tooling Column	1
2 5CV13041-IN	130MM X 160MM Self-Centering Vise	24
3 5SH1250	Locator Bolt	48

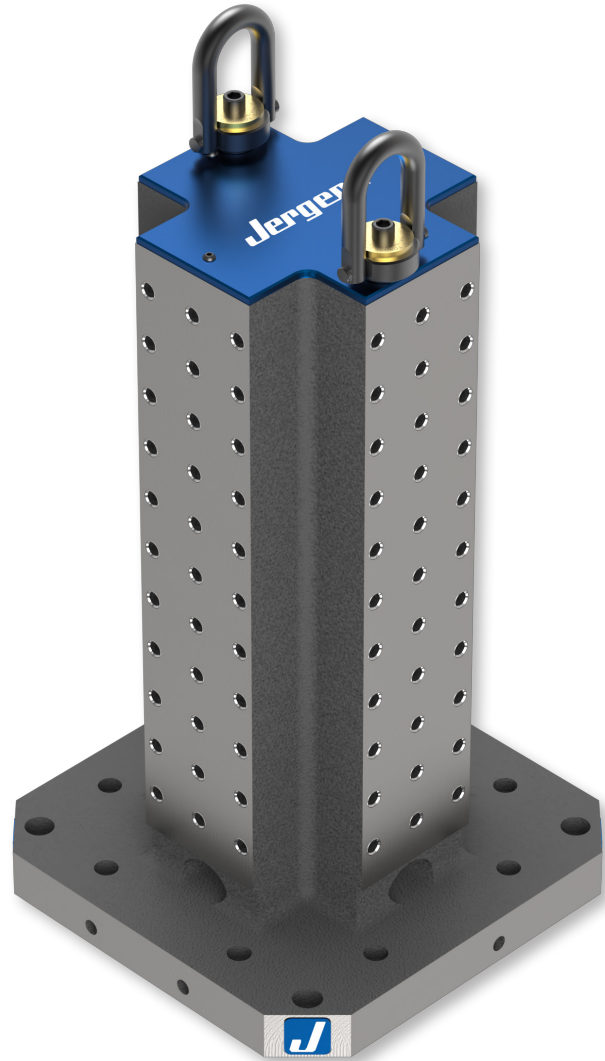
BALL LOCK® CAST IRON TOOLING COLUMN



Part Number	Description	Qty
1 69253	500MM 2-Sided Tooling Column	1
2 49612	25MM Ball Lock® Shank	8
3 28827	20 x 20 Ball Lock® Fixture Plate	2



400MM CROSS TOOLING COLUMN: 69211

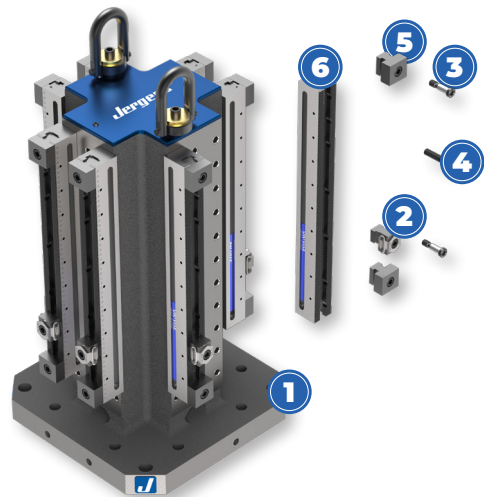


FEATURES & BENEFITS

- Rigid single piece construction
- Stress Relieved Class 40 Cast Iron
- Faces include QLS mounting pattern
- Base and sides milled flat, perpendicular, and parallel within 0.001"/ft
- Includes mounting holes for popular 400MM pallets
- Blank tooling columns also available
- Custom sizes and configurations available upon request
- Hardware Includes:
 - Top coverplate
 - (2) Jergens Center Pull Hoist Rings

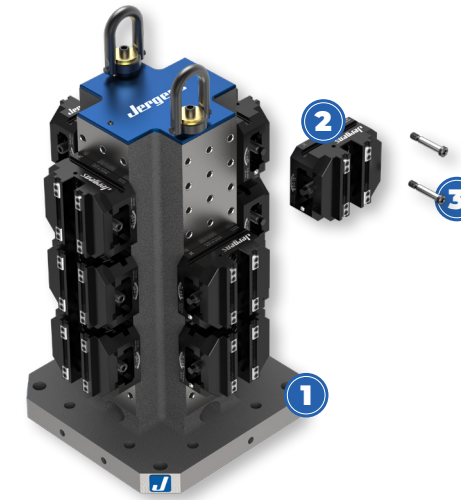


OK-VISE® CAST IRON TOOLING COLUMN



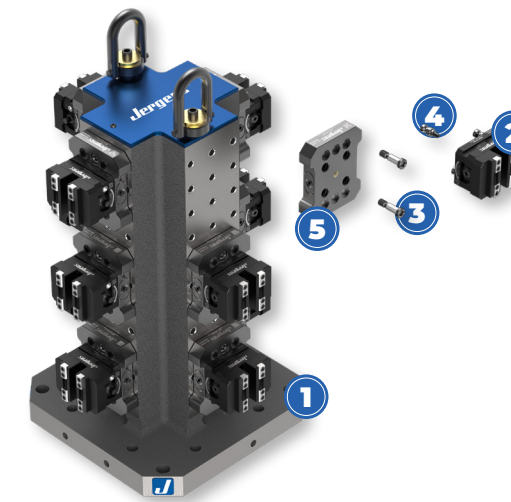
Part Number	Description	Qty
1 69211	400MM Cross Tooling Column	1
2 RMC-DS	OK-VISE Smooth Clamp	8
3 5SH1225	Locator Bolt	16
4 771720	M12 SHCS	40
5 RMS-S	OK-VISE Smooth Stop	16
6 RM-500	500MM OK-VISE Multi-Rail Base	8

130MM SELF-CENTERING VISE CAST IRON TOOLING COLUMN



Part Number	Description	Qty
1 69211	400MM Cross Tooling Column	1
2 5CV13041-IN	130MM x 160MM Self-Centering Vise	12
3 5SH1250	Locator Bolt	24

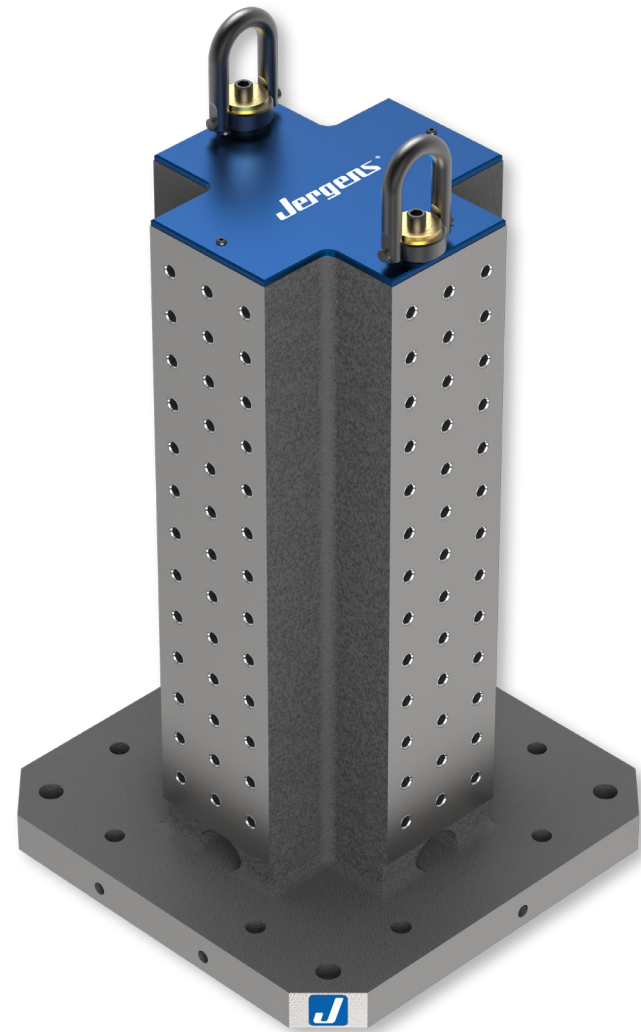
75MM SELF-CENTERING VISE CAST IRON TOOLING COLUMN



Part Number	Description	Qty
1 69211	400MM Cross Tooling Column	1
2 5CV13049-IN	75MM x 100MM Self-Centering Vise	12
3 5SH1225	Locator Bolt	24
4 QL-200800	16MM Quick-Loc™ Pull Stud	48
5 QL2-100205	Quick-Loc™ 52MM Receiver	12



500MM CROSS TOOLING COLUMN: 69241



FEATURES & BENEFITS

- Rigid single piece construction
- Stress Relieved Class 40 Cast Iron
- Faces include QLS mounting pattern
- Base and sides milled flat, perpendicular, and parallel within 0.001"/ft
- Includes mounting holes for popular 500MM pallets
- Blank tooling columns also available
- Custom sizes and configurations available upon request
- Hardware Includes:
 - Top coverplate
 - (2) Jergens Center Pull Hoist Rings

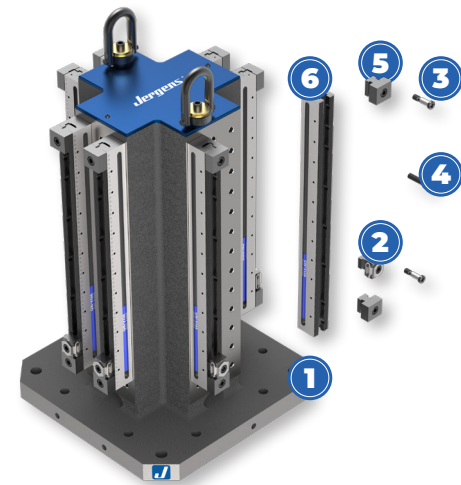


130MM SELF-CENTERING VISE CAST IRON TOOLING COLUMN



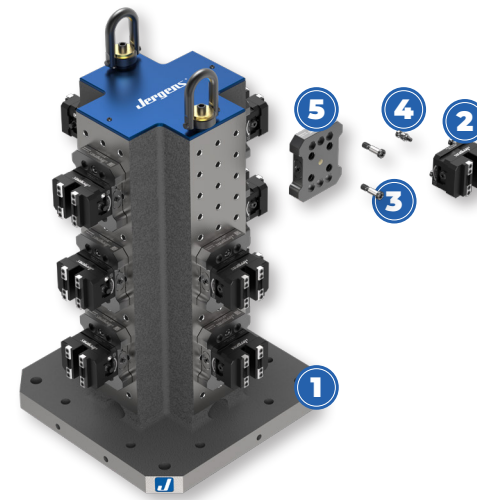
Part Number	Description	Qty
1 69241	500MM Cross Tooling Column	1
2 5CV13041-IN	130MM x 160MM Self-Centering Vise	16
3 5SH1250	Locator Bolt	32

OK-VISE® CAST IRON TOOLING COLUMN



Part Number	Description	Qty
1 69241	500MM Cross Tooling Column	1
2 RMC-DS	OK-VISE Smooth Clamp	8
3 5SH1225	Locator Bolt	16
4 771720	M12 SHCS	48
5 RMS-S	OK-VISE Smooth Stop	16
6 RM-600	600MM OK-VISE Multi-Rail Base	8

75MM SELF-CENTERING VISE CAST IRON TOOLING COLUMN



Part Number	Description	Qty
1 69241	500MM Cross Tooling Column	1
2 5CV13049-IN	75MM x 100MM Self-Centering Vise	12
3 5SH1225	Locator Bolt	24
4 QL-200800	16MM Quick-Loc™ Pull Stud	48
5 QL2-100205	Quick-Loc™ 52MM Receiver	12



WORLD HEADQUARTERS

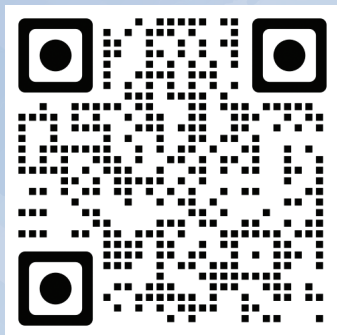
15700 S. WATERLOO ROAD
CLEVELAND, OH 44110-3898

 877.426.2504

 JERGENSINC.COM/WORKHOLDING

 WORKHOLDING@JERGENSINC.COM

FIND OUR WORKHOLDING PRODUCTS
AND SUPPORTING INFO ONLINE.



DISTRIBUTED BY:



WORKHOLDING SOLUTIONS



SPECIALTY FASTENERS



LIFTING SOLUTIONS

©2022 JERGENS, INC.

